

not to just a new home, but...

a step to rare  
advantages



Project by:



**OFFICE:**

807, 8th Floor, BVR EK, Gujarat College Corner, Ellis Bridge, Ahmedabad - 380006

**Email :** [info@vrinfrastructures.com](mailto:info@vrinfrastructures.com)     **Website :** [www.vrinfrastructures.com](http://www.vrinfrastructures.com)

**Phone :** 079 - 2972 0800

**FOR BOOKING : +91 89800 39300**



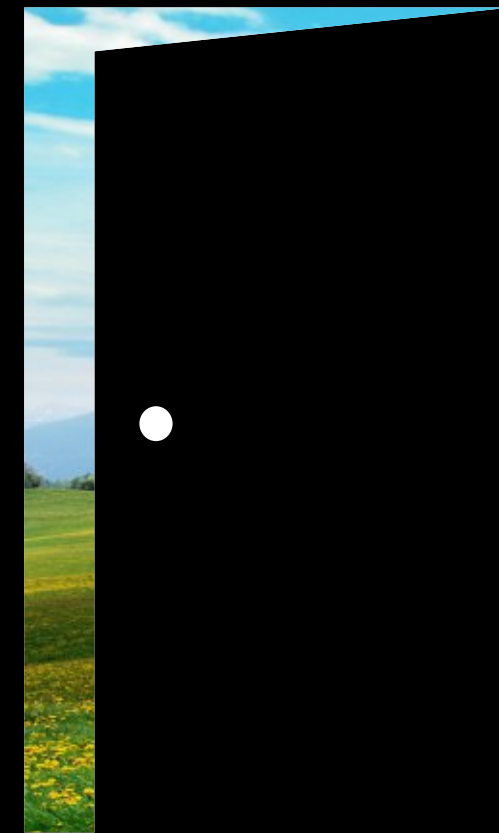
Eximmius 9737052221



**VisionnaiR**

a peaceful street  
a surrounding vibrance  
and...

the garden.  
the pond.  
the landscape.



at your doorstep

In the most preferred location of city, the SBR

A SCINTILLATING AND  
SOOTHING EMBRACE



LIVING MADE ELITE  
AND EXTRAVAGANT

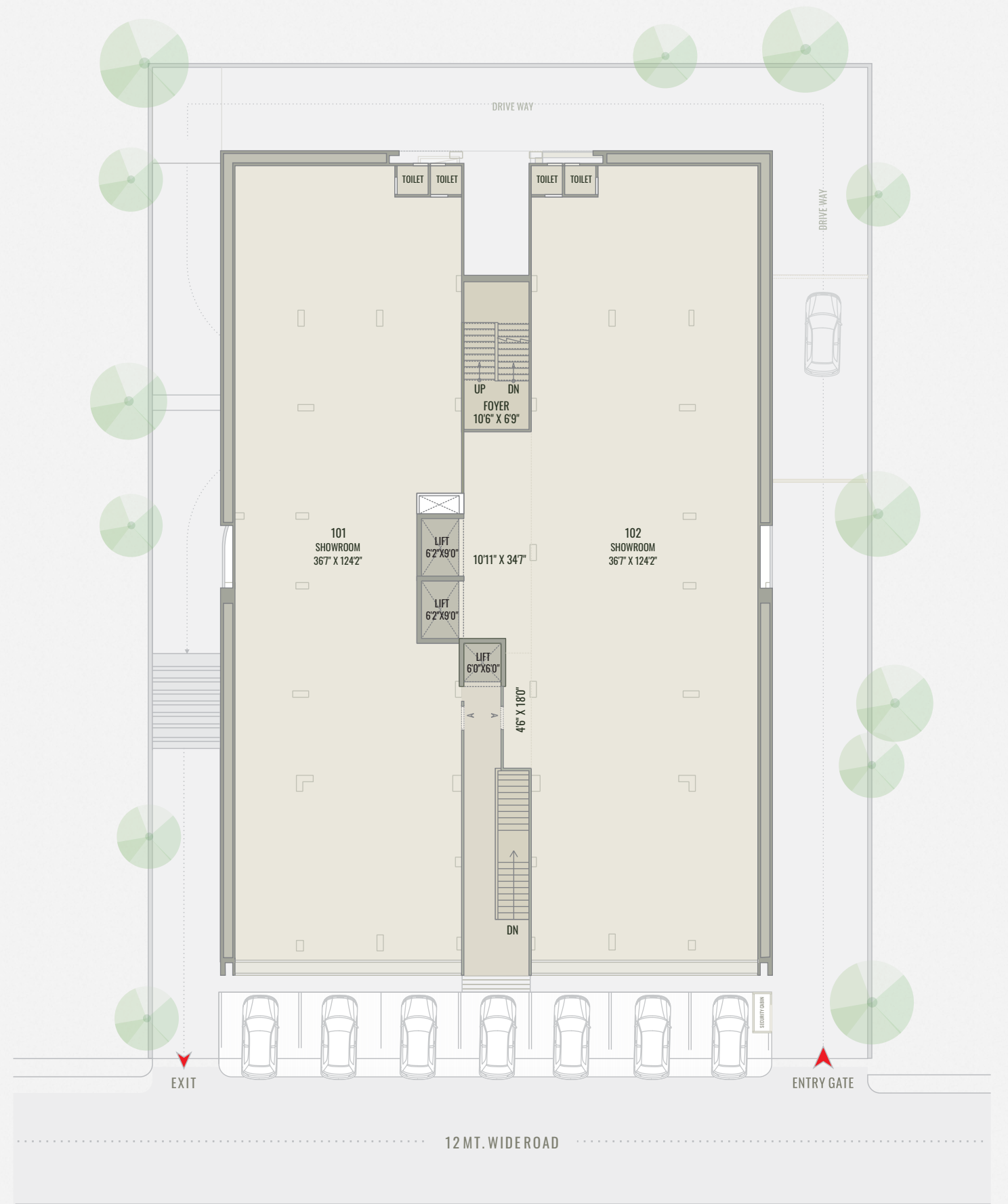




EXQUISITE FOYER



GROUND FLOOR



FIRST FLOOR

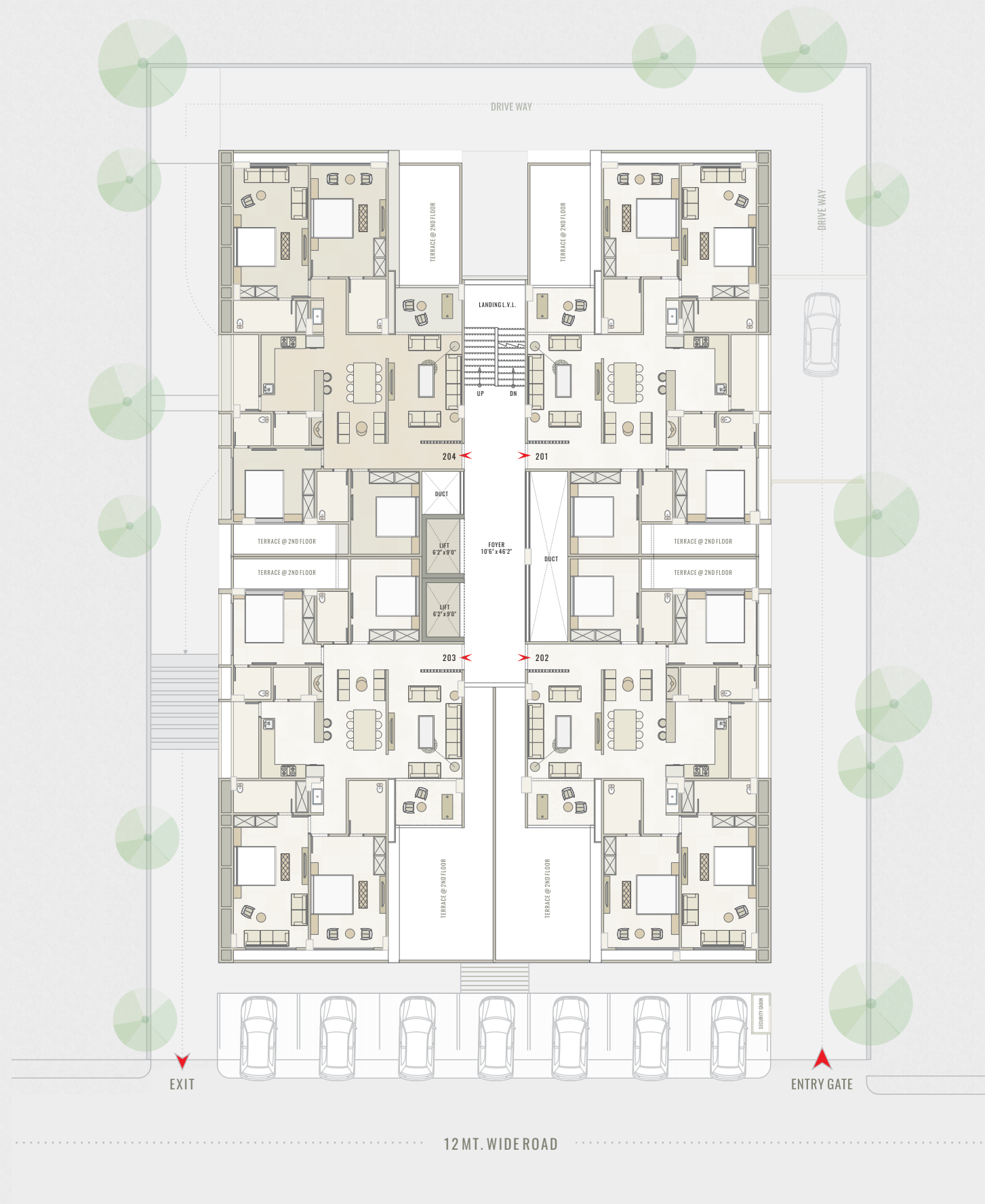




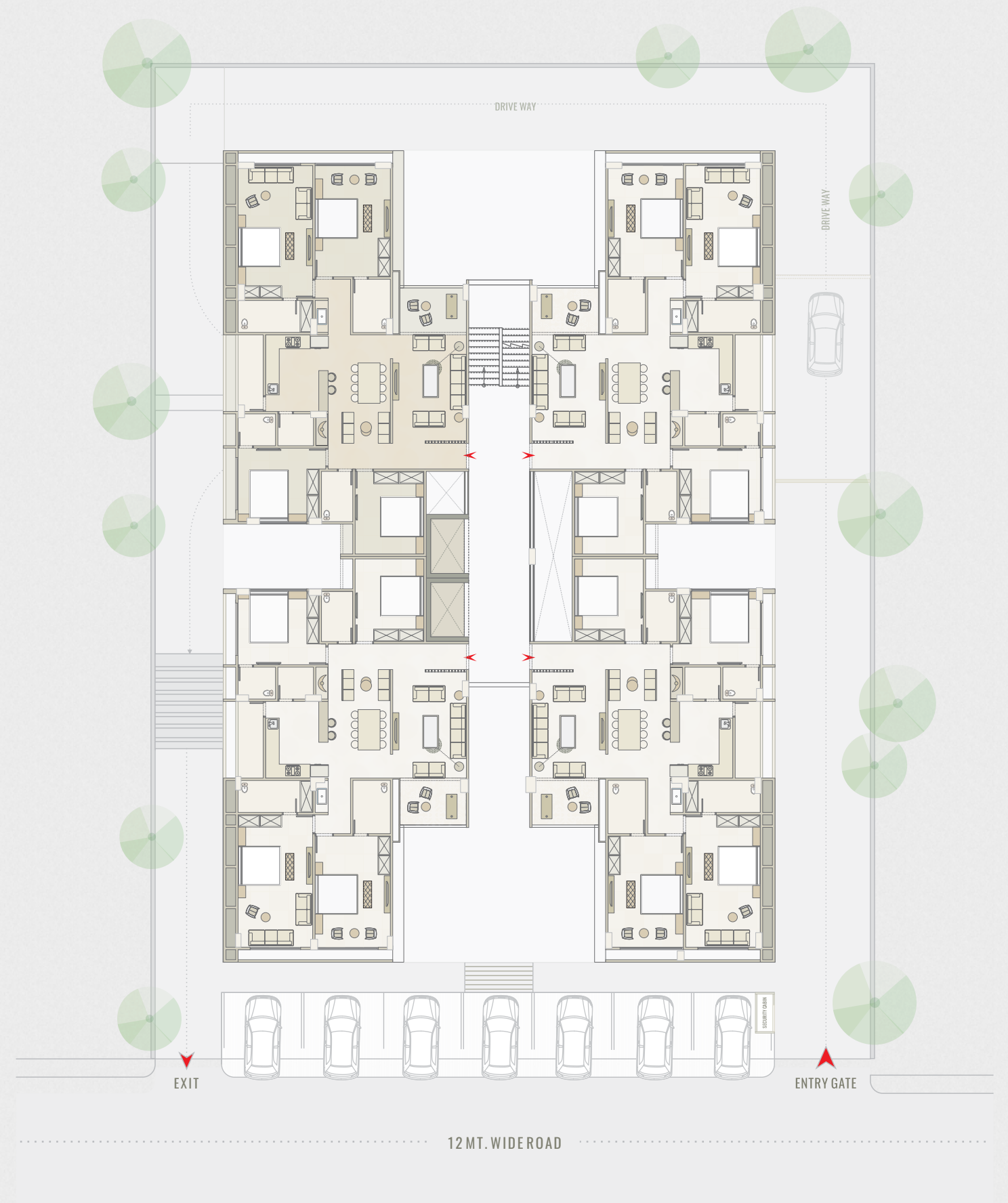








SECOND FLOOR



TYPICAL FLOOR





UNIT PLAN



A PORTICO STOREY  
WITH AN ARRAY OF  
LUXURIES



## SPECIFICATION

FLOORING	<ul style="list-style-type: none"><li>● Drawing Room / Living / Kitchen / Dining / Vestibule - Italian Marble Flooring.</li><li>● Bedrooms - Vitrified Tiles.</li><li>● Balcony and Wash Yard area - Granite Flooring.</li></ul>
KITCHEN	<ul style="list-style-type: none"><li>● Granite Top Kitchen Platform with S.S Sink.</li><li>● Vitrified Tiles upto Dado.</li><li>● Provision for electrical and plumbing point for RO.</li></ul>
TOILET	<ul style="list-style-type: none"><li>● Plumbing Facility for RO.</li><li>● Ultra Contemporary Italian Type Dado.</li><li>● Top-of-the-line CP Fittings and Sanitary Ware - Jaquar or Equivalent Series.</li></ul>
WASH AREA	<ul style="list-style-type: none"><li>● Granite Flooring and Vitrified Tiles Dado up to Parapet Level.</li><li>● Provision of Electrical and Plumbing points for Washing Machine.</li></ul>
WALL FINISH	<ul style="list-style-type: none"><li>● Putty with Primer Coat.</li></ul>
WINDOWS	<ul style="list-style-type: none"><li>● Flush Door / Anodized Aluminum or UPVC Sliding Windows.</li></ul>
PLUMBING WORK	<ul style="list-style-type: none"><li>● CPVC / GI Water supply Pipes and UPVC Pipes for Soil, Waste and Drainage System.</li></ul>
ELECTRICAL WORK	<ul style="list-style-type: none"><li>● Branded Modular Switches Anchor / Schindler / Equivalent</li></ul>
HVAC	<ul style="list-style-type: none"><li>● Provision for Centrally Air Conditioned Units.</li></ul>
SECURITY SYSTEM	<ul style="list-style-type: none"><li>● 24 x 7 Security with CCTV Surveillance</li><li>● Intercom</li></ul>

## COMMUNITY AMENITIES

Entrance Arrival Plaza

Exclusive Waiting Lounge.

Multilevel basement with Ample Car Parking Facility.

Separate Lifts for Commercial and Residential Units.

- 1 Lift for Commercial
- 2 Lifts for Residential Units  
(Trio / Kone / Schindler or Equivalent)

### Amenities

- Event Plaza, Yoga Deck, Garden with Senior Citizen Sit Outs, Children's Play Area, Jogging Track, Dedicated Gaming Zone

## SITEMAP



### VISIONNAIR SITE ADDRESS:

Near Global Hospital, Opp. Bodakdev Auda Garden, B/h Armieda,  
Off Sindhu Bhavan Road, Bodakdev, Ahmedabad - 380054

Phone: +91 89800 39300 Email: vrinfra01@gmail.com

RERA Register No. : PR/GJ/AHMEDABAD/AHMEDABAD CITY/AUDA/MAA06114/260919

## TERMS & CONDITIONS

● All right reserved to developer and architect for any changes in plans, elevation & specifications. ● Irregular payment will be the cause of booking cancellation. ● Stamp Duty, registration charges, legal charges, AMC charges and AEC charges including substation and cable charges will be charged extra. ● GST or any such additional taxes will be applicable extra. ● Maintenance deposit will be charged extra. ● External changes shall not be allowed only internal changes shall be done with prior permission and shall be charged extra in advance.